

**SHORTS**

Suppliers to the Lift Industry

PROJECT ENQUIRY FORM**Page 1 of 5**Company: Contact Name: E-mail: Enquiry Date: Project Reference: **1. STANDARDS COMPLIANCE**☐ EN 81-1/2:1998☐ EN 81-72: 2015 FIREFIGHTERS LIFTS☐ EN 81-1/2:1998 +A3:2009☐ EN 81-20: 2014**2. GENERAL FEATURES****Supply Voltage** Volts Htz Wire**System**☐ Simplex☐ Duplex☐ Triplex☐ Quadruplex**Operation**☐ Universal☐ Down Collective☐ Full Collective**Wiring**☐ Hard Wired☐ Fully Pre-Wired☐ Part Pre-Wired**3. PUMP or LIFT MACHINE**Power kWNominal Current ampsSpeed m/s**4. LIFT DOORS****Lift Car Doors**☐ Manual / No Car Doors☐ Independent☐ VVVF Regulated☐ Automatic☐ Busmatic**Doors Voltage** Volts☐ AC ☐ DC☐ Pre-Opening☐ Powered During Run☐ Door Brake☐ DC Injection☐ Electric Volts☐ AC ☐ DC**Landing Doors**☐ Manual☐ Automatic**Retiring Ramp** Volts☐ AC ☐ DC

Would you like a price for

☐ Complete Car / Landing Doors☐ Replacement Car Door Operator**Manufacturer****Number of Car Doors****Panel Arrangement** Panel☐ Side ☐ Centre**Required Finish****Model****Number of Landings****Clear Door Opening** mm



**IF YOU REQUIRE A CONTROLLER PRICE PLEASE
FILL OUT THE FOLLOWING SECTIONS**

ALL PANELS: PAGE 1 SECTIONS 1,2,3, & 4

VVVF PANEL: PAGE 2, SECTION 5

HYDRO PANEL: PAGE 2, SECTION 6

5. MACHINE DETAILS

Traction System

☐ 2 Speed

☐ VVVF Machine Room

☐ VVVF MRL "Door Frame"

☐ VVVF MRL "Shaft & Door Frame"

☐ Open Loop Operation

☐ Closed Loop Operation

☐ Geared with encoder 5V RS485

☐ Geared with open collector encoder (12V to 15V)

☐ Gearless with EnDat encoder

☐ Gearless with Sin/Cos encoder

Brake Voltage

Volts (300W)

☐ AC ☐ DC

Poles

Frequency

RPM

Motor Fan

☐ 1 Phase - 230V

☐ 3 Phase - 400V

amps

Manufacturer

Model

**If you would like a price for a replacement lift machine,
please fill out the machine survey form on page 3 of this
document**

6. HYDRAULIC SYSTEM

Starting Method

☐ Direct On Line

☐ Star Delta

☐ Soft Start

No. of Valves

Valve Voltage

Volts

☐ DC ☐ AC

☐ Oil Cooler

Volts

☐ DC ☐ AC

☐ Tank Heater

Volts

☐ DC ☐ AC

Suspension

☐ 1:1 ☐ 2:1

Valve Block Manufacturer

Valve Block Model

Flow Rate

l/min

If you would like a price for a replacement pump unit please fill out the additional system info below

Cylinder Make / Model

Lift Travel

Metres

Existing Hose Length

Metres

Piston Diameters

1 mm

2 mm

3 mm

Valve Block Connection Diameter

Inch

No. of Cylinders

No. of Stages

No Load Static Pressure =

Bar

Load Capacity

Kg

Cabin Weight

Kg

LIFT MACHINE

Page 3 of 5

**IF YOU REQUIRE A REPLACEMENT
MACHINE PLEASE COMPLETE:**

PAGE 1: SECTIONS 2 & 3

PAGE 3: ALL SECTIONS

7. MACHINE ENQUIRY

Load Capacity

Kg

Cabin Weight

Kg

CWT Weight

Kg

Number of Ropes

Type of Machine

☐ Geared ☐ Gearless

Encoder Required

☐ Yes

Diameter of Ropes

mm

Suspension

☐ 1:1 ☐ 2:1 ☐ 4:1

Handing of Machine

☐ As drawn below

Rope Pitch

mm

Traction Sheave Diameter

mm

☐ Opposite Hand

Replacement Bedframe

☐ Full Height

☐ Low Profile

Machine Location

☐ Top ☐ Bottom

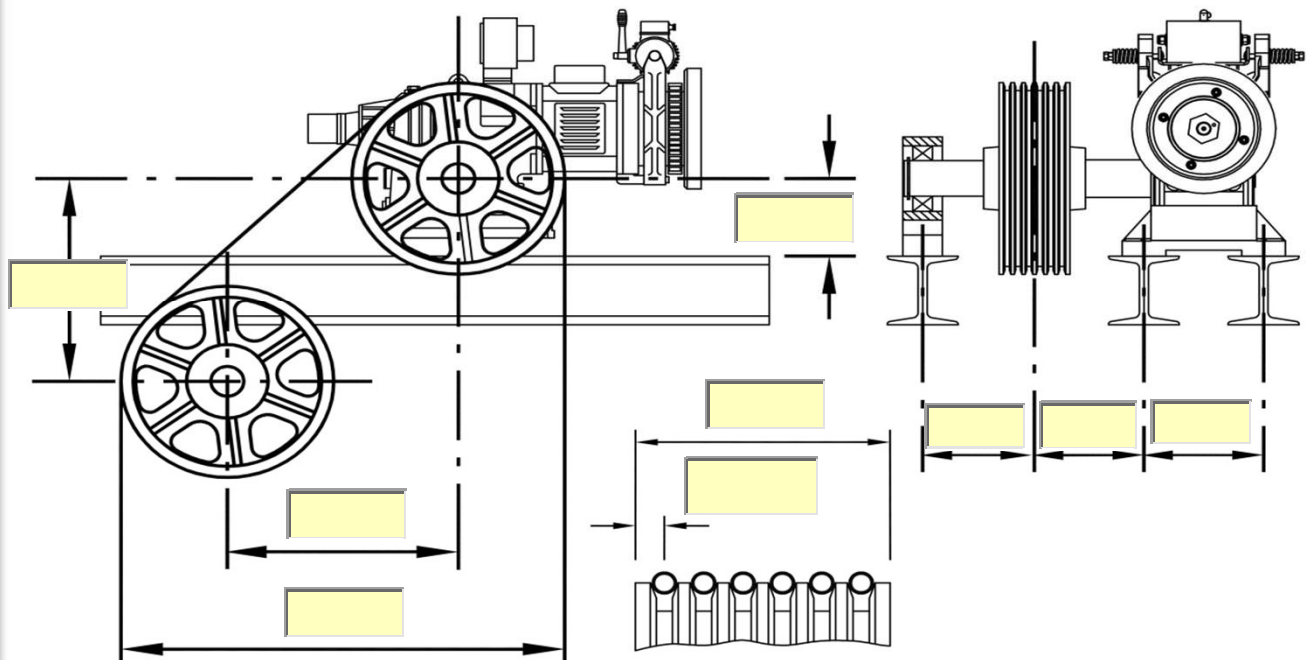
☐ Side Level

Diverter Diameter

mm

please fill out the key dimensions below, for more complex arrangements

please attach your own site survey details



SHAFT DETAILS

Page 4 of 5

PLEASE FILL OUT THIS PAGE FOR ALL
PROJECTS IN PARTICULAR FOR

CONTROLLER: FLOOR LEGENDS / ENTRANCE POSITIONS

REPLACEMENT MACHINE: LIFT TRAVEL

PRE-WIRED ELECTRICAL SYSTEM: ALL DETAILS

REPLACEMENT COP: FLOOR LEGENDS / ENT. POSITIONS

8. SHAFT DETAILS

Headroom

Side A

Floor Legend

Side B

Mark Entrances Side A or B with:

X

Distance from lift shaft to control panel

= **metres**

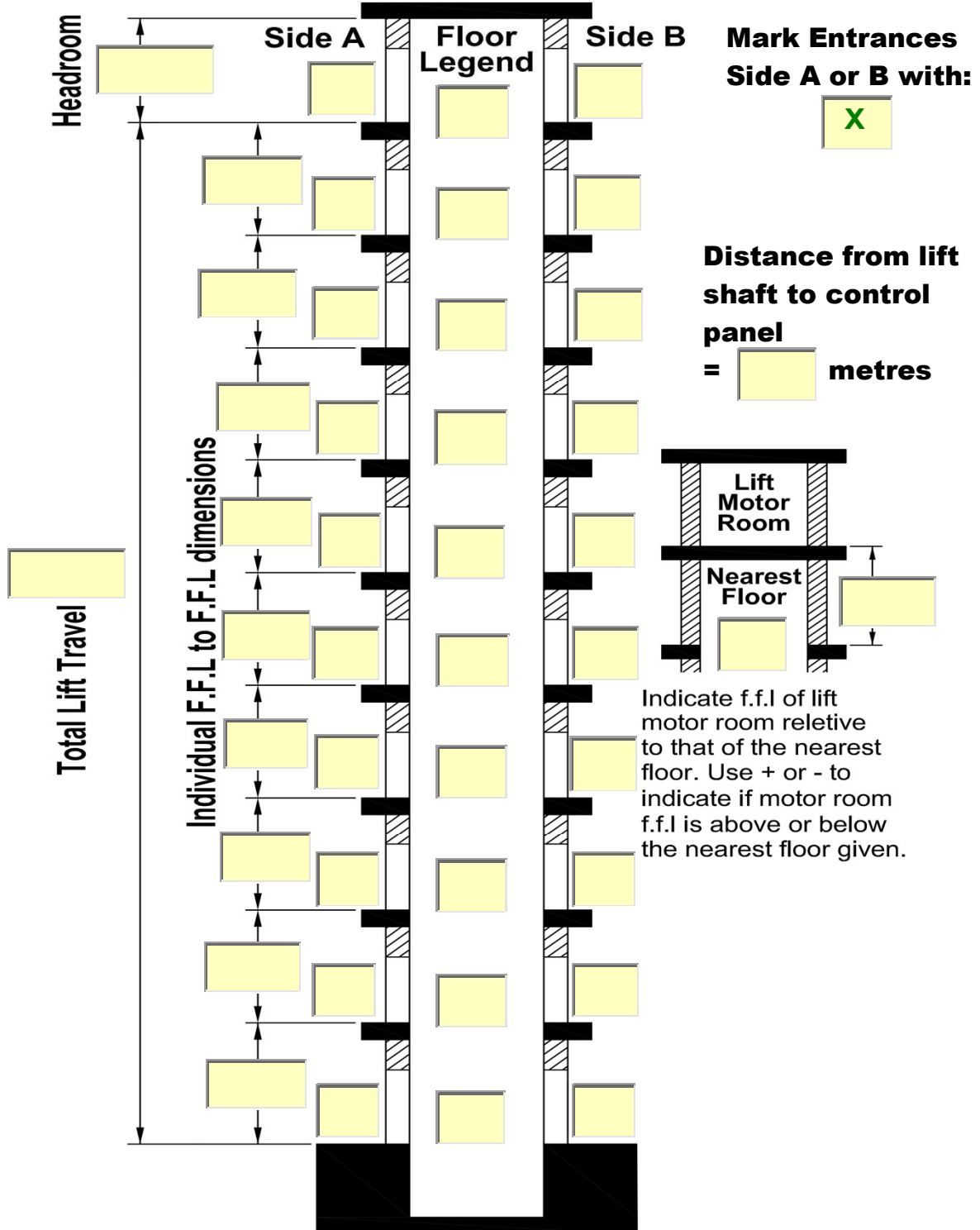
Total Lift Travel

Individual F.F.L to F.F.L dimensions

Lift Motor Room

Nearest Floor

Indicate f.f.l of lift motor room relative to that of the nearest floor. Use + or - to indicate if motor room f.f.l is above or below the nearest floor given.



EXTRAS

Page 5 of 5

IF YOU REQUIRE A REPLACEMENT COP PLEASE
INDICATE REQUIRED LOAD PLATE INFO BELOW

Load Capacity:

Lift Reference:

Telephone Number:

9. FIXTURES



Replacement Fixtures Required

☐ Car Operating Panel

☐ Landing Operating Panels

☐ Landing Indicator Panels

☐ Car & Landing Displays Retained

☐ 1 Line Per Floor

☐ Binary

☐ 1 Line Per Segment

☐ Gray Code

10. AUTODIALLER



☐ MEMCOM Autodialler

☐ Slave Stations

☐ GSM Unit

X

11. OVERSPEED GOVERNOR



☐ Overspeed Governor

☐ Pit Tension Pulley

Governor Diameter

mm

Trip Speed

m/s

Lift Speed

m/s

Remote Trip or Reset

☐ Trip

☐ Reset

Volts

☐ AC

☐ DC

12. EXTRAS

☐ Car Top Control Station

☐ 80 Way Half Way Box

☐ Trailers

Metres

☐ Lift Shaft Lighting

☐ Lift Cabin Lighting

☐ Amendment A3 Package

☐ Load Weighing Device

☐ Light Curtains