



POSTERBOOK 2022

LIFT DOOR OPERATORS SORTED BY MANUFACTURER



Table of contents

4	Akron	12	MAN
	Aljo		Masora
	Artis		Meiller
	Autür		Metron
	Bauer		Mitsubishi
	Camus		
	Canossa	13	Monitor
	Ceita		Motala
	Cenia		Orona
			Osma
5	Cerny	14	Otis
	CMM		
	DDR	16	Peignen
	Dewhurst		Prisma
	Doppler		Rathgeber
	Dover		Rheinstahl-Eggers-Kehrhahn
	Dupar		Riedl
	Elevator		
	Elex	17	Roux-Combaluzier
6	Elit		Russia Door
	Express		Sabiem
	Falconi		Schindler
	Fermator		
	Fiam	18	Schlieren
	Forsid		Schmitt & Sohn
7	Fourini	19	Schmitt Ingelheim
	Fujitec		Selcom
	Füller und Knörzer		Sematic
	GAL		
	Gilgen	20	Siemens
	GMV Victory		Slycma
	Haack		Soretex
	Hammong and Champness		Stahl
			Starlift
8	Haushahn	21	Suzhou
	Hävemeier und Sander		Tacos
	Hiro		Telco
	Hitachi		Tesio
9	Hütter		Thyssen
	Hyundai	23	Toshiba
	IGV		Unitec
	Kasper		Vestner
	Kiekert		Walter Mayer
	Kleemann		Weber
	Kleindienst		Wegam
	Koch		Westinghouse
10	Kone		Wittur
11	Krames	24	Langer & Laumann Products
	LG Elevator		
	Liftcomp		
	Lüthi		
	Lutz		
	Lyngejensen		
	Mac		

Aufzugstürantriebe nach Herstellern

Auf den folgenden Seiten ist unser Türantriebs-Poster nun zum Durchblättern verfügbar. Kontaktieren Sie uns bei Fragen zu möglichen Abweichungen der Modellvarianten. Wir freuen uns auf Ihre Nachricht und Ihre Anregungen!

Lift door operators sorted by manufacturer

On the following pages you can find the content of our poster now available as a booklet. Please contact us for suggestions and for any questions about possible differences of the model variants. We are looking forward to hearing from you!

Les entraînements de porte d'ascenseur selon les fabricants

Sur les pages suivantes, vous trouverez notre affiche de l'opérateur de porte, maintenant disponible sous forme de brochure. N'hésitez pas à nous contacter si vous avez des questions sur les variantes ou des suggestions, nous attendons votre message.

Liftdeur-aandrijvingen gesorteerd op fabrikant

Op de volgende pagina's is onze poster ook als brochure beschikbaar gemaakt. Voor afwijkende modellen graag contact met ons opnemen, zodat wij uw juist kunnen adviseren. Hopelijk kunnen wij u snel helpen!

Head Office & Distribution worldwide

Langer & Laumann Ing.-Büro GmbH
Wilmsberger Weg 8
48565 Steinfurt, Germany
Tel. +49 (2552) 92 7 91 0

info@lul-ing.de | www.lul-ing.de

AKRON center

2022/1



ALJO

2022/2



ARTIS center

2022/3



AUTÜR telescope

2022/4



BAUER 1

2022/5



Bauer 2

2022/6



Bauer 3

2022/7



Bauer 4

2022/8



CAMUS center

2022/9



Camus telescope

2022/10



CANOSSA

2022/11



Canossa telescope

2022/12



CEITA Eleflex center

2022/13



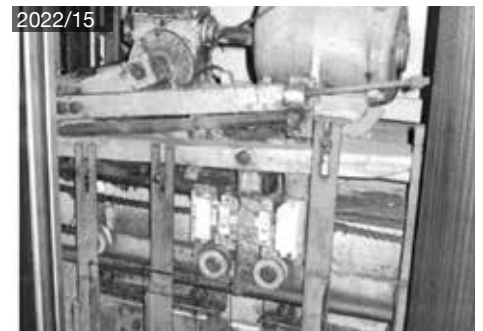
Ceita Elematic center

2022/14



CENIA Tacos

2022/15



CERNY center

2022/16



Cerny telescope

2022/17



CMM center

2022/18



CMM telescope

2022/19



CMM tooth belt telescope

2022/20



DDR center

2022/21



DDR telescope

2022/22



DEWHURST telescope

2022/23



DOPPLER telescope

2022/24



DOVER center

2022/25



DUPAR telescope

2022/26



ELEVATOR Trading Marathon 100

2022/27



Elevator Trading Marathon 200

2022/28



Elevator Trading Marathon 3000

2022/29



ELEX Aurex

2022/30



ELIT Electronic center

2022/31



EXPRESS cyclonical

2022/32



FALCONI center

2022/33



Falconi Typ X center

2022/34



FERMATOR AS6DE

2022/35



Fermator Folding door center

2022/36



Fermator Sinus telescope

2022/37



Fermator VVF center

2022/38



FIAM Kette telescope

2022/39



Fiam Sinus center

2022/40



FORSID 85 telescope

2022/41



Forsid 85N center

2022/42



Forsid 85N telescope

2022/43



Forsid 92 VF center

2022/44



Forsid 92 VF telescope

2022/45



Forsid Europa

2022/46



Forsid ZIP center

2022/47



Forsid ZIP telescope

2022/48



FOURINI

2022/49



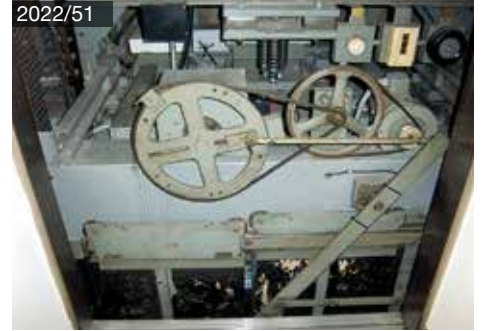
Fourini telescope

2022/50



FUJITEC telescope

2022/51



FÜLLER UND KNÖRZER

2022/52



GAL center

2022/53



GAL telescope

2022/54



GAL toothed belt

2022/55



GILGEN folding door

2022/56



GMV VICTORY center

2022/57



GMV Victory telescope

2022/58



HAACK telescope

2022/59



HAMMONG AND CHAMPNESS DC68 telescope

2022/60



HAUSHAHN Kette telescope

2022/61



Haushahn Logos telescope

2022/62



Haushahn P41 telescope

2022/63



Haushahn TASS80 telescope

2022/64



Haushahn TS54 telescope

2022/65



Haushahn TSS72 telescope

2022/66



Haushahn ZS54 center

2022/67



Haushahn ZSS72 center

2022/68



HÄVEMEIER UND SANDER Kat 7x telescope

2022/69



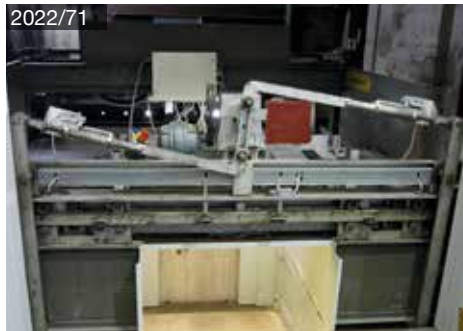
Hävemeier und Sander KAT69 telescope

2022/70



HIRO center

2022/71



Hiro central telescope

2022/72



Hiro chain telescope

2022/73



Hiro telescope

2022/74



HITACHI center

2022/75



HÜTTER Hubtür VKT

2022/76



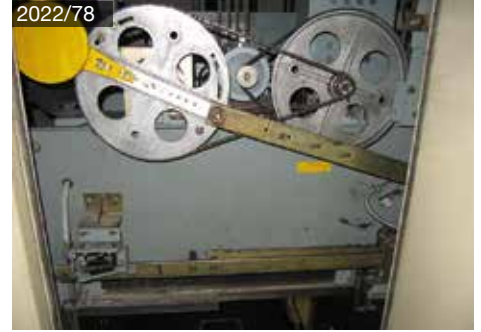
Hütter telescope

2022/77



HYUNDAI telescope

2022/78



IGV 2010 Linear 1200

2022/79



IGV center

2022/80



IGV telescope

2022/81



KASPER center

2022/82



Kasper telescope

2022/83



KIEKERT

2022/84



KLEEMANN 1 telescope

2022/85



Kleemann 2 telescope

2022/86



KLEINDIENST telescope

2022/87



KOCH 1 telescope

2022/88



Koch 2 telescope

2022/89



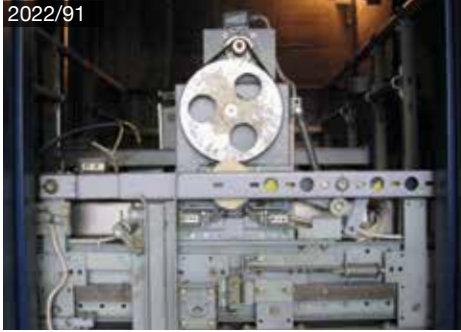
Koch Sinus telescope

2022/90



KONE ADB center

2022/91



Kone ADC center

2022/92



Kone ADC telescope

2022/93



Kone ADE center

2022/94



Kone ADE telescope

2022/95



Kone ADF center

2022/96



Kone ADF telescope

2022/97



Kone ADM center

2022/98



Kone ADM folding door

2022/99



Kone ADM telescope

2022/100



Kone ADR telescope

2022/101



Kone ADV telescope

2022/102



Kone ADX center

2022/103



Kone ADX telescope

2022/104



Kone AMD center

2022/105



Kone AMD telescope

2022/106



Kone Fiam center

2022/107



Kone Isola center

2022/108



Kone OAK 45 telescope

2022/109



KRAMES Krafimatic Dentamatic 3K TS telescope

2022/110



Krames KraphiFalt V4FZ center

2022/111



Krames Tor telescope

2022/112



LG ELEVATOR Lucky Goldstar center

2022/113



LG Elevator Lucky Goldstar telescope

2022/114



LIFTCOMP center

2022/115



Liftcomp telescope

2022/116



LÜTHI center

2022/117



LUTZ telescope

2022/118



LYNGEJENSEN dormaskine

2022/119



MAC Puarsa center

2022/120



Mac Puarsa toothed belt

2022/121



MAN 1 telescope

2022/122



MAN 2 center

2022/123



MAN 3 telescope

2022/124



MAN 4 telescope

2022/125



MASORA AS center

2022/126



MEILLER Drahtseil telescope

2022/127



Meiller MiDrive

2022/128



Meiller segment sliding door GTS6 central

2022/129



Meiller TTK spindle center

2022/130



Meiller TTK spindle telescope

2022/131



Meiller TTK32 telescope

2022/132



METRON Folding door

2022/133



Metron telescope

2022/134



MITSUBISHI central

2022/135



Mitsubishi telescope

2022/136



Mitsubishi toothed belt

2022/137



MONITOR 85 telescope

2022/138



Monitor 85N center

2022/139



Monitor 85N telescope

2022/140



Monitor 92 VF center

2022/141



Monitor 92 VF telescope

2022/142



Monitor ZIP center

2022/143



Monitor ZIP telescope

2022/144



MOTALA

2022/145



ORONA center

2022/146



Orona telescope

2022/147



Orona toothed belt

2022/148



OSMA Typ 1 telescope

2022/149



Osma Typ 2 TS5 center

2022/150



Osma Typ 3 TS6 telescope

2022/151



OTIS 6770-A center

2022/152



Otis 6940 center

2022/153



Otis 6970 center 2 flügelig

2022/154



Otis 6970 center 4 flügelig

2022/155



Otis 6970 New York center

2022/156



Otis 6970 telescope

2022/157



Otis 7300 telescope

2022/158



Otis 9550 center 1

2022/159



Otis 9550 center 2

2022/160



Otis 9550 Orly telescope

2022/161



Otis 9550-T center

2022/162



Otis 9550-Y telescope

2022/163



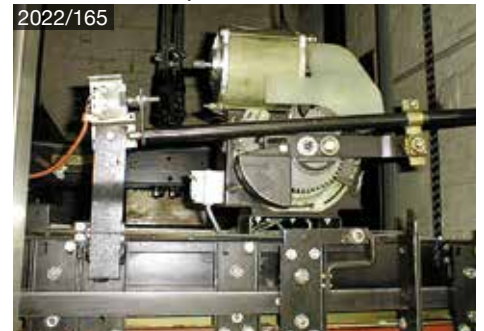
Otis 9691 - Otis 9550CC telescope

2022/164



Otis 9691 telescope

2022/165



Otis 9940 telescope

2022/166



Otis 9940-H telescope

2022/167



Otis AT120

2022/168



Otis D2000 telescope

2022/169



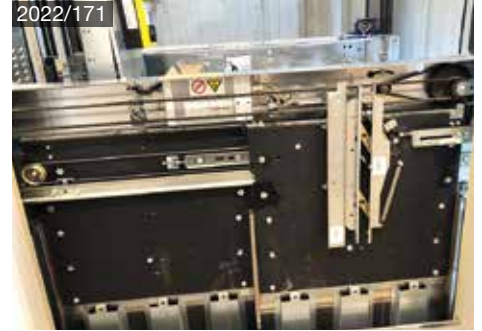
Otis D2200 center

2022/170



Otis D2200 telescope

2022/171



Otis DO 2000 center

2022/172



Otis DO 2000 telescope

2022/173



Otis GMP telescope

2022/174



Otis MLI folding door

2022/175



Otis MRDS telescope

2022/176



Otis Orly telescope

2022/177



Otis OVL center

2022/178



Otis Protecta

2022/179



Otis RBS telescope

2022/180



Otis Vertica 3

2022/181



PEIGNEN A30 center

2022/182



Peignen A30

2022/183



Peignen A45

2022/184



PRISMA Concord telescope

2022/185



Prisma Linear DOS center

2022/186



Prisma Linear DOS telescope

2022/187



Prisma Micro MS40 telescope

2022/188



Prisma Sinus Concord

2022/189



Prisma Sinus telescope

2022/190



RATHGEBER Drahtseil center

2022/191



Rathgeber Drahtseil telescope

2022/192



RHEINSTAHL-EGGERS-KEHRHAHN center

2022/193



Rheinstahl-Eggers-Kehrhaahn REK chain

2022/194



RIEDL 3 panel telescope

2022/195



Riedl RTK telescope

2022/196



Riedl RZK center

2022/197



ROUX-COMBALUZIER telescope

2022/198



RUSSIA DOOR center

2022/199



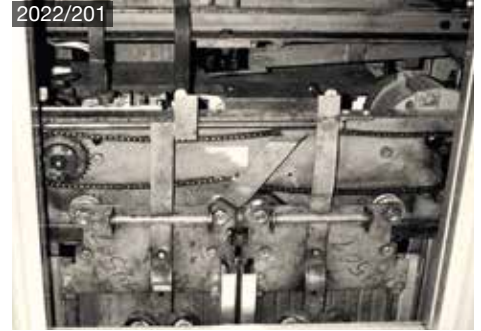
Russia Door Mogilev center

2022/200



SABIEM center

2022/201



SCHINDLER QK8 Falttür

2022/202



Schindler QKS6 center telescope

2022/203



Schindler QKS6 telescope

2022/204



Schindler QKS7 center

2022/205



Schindler QKS8 center

2022/206



Schindler QKS8 telescope

2022/207



Schindler QKS9 center telescope

2022/208



Schindler QKS9 center

2022/209



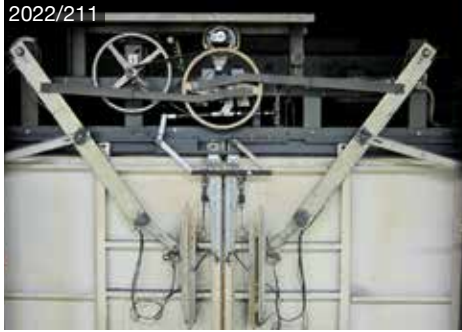
Schindler QKS9 telescope

2022/210



Schindler QKS10 center telescope

2022/211



Schindler QKS11 telescope

2022/212



Schindler Varidor 10 telescope

2022/213



Schindler Varidor 20 center

2022/214



Schindler Varidor 20 telescope

2022/215



Schindler Varidor 30 center

2022/216



Schindler Varidor 30 telescope

2022/217



Schindler Varidor 50 telescope

2022/218



SCHLIEREN TA 2 center

2022/219



Schlieren TA 2 telescope

2022/220



SCHMITT & SOHN chain telescope

2022/221



Schmitt & Sohn crank arm

2022/222



Schmitt & Sohn flat belt telescope

2022/223



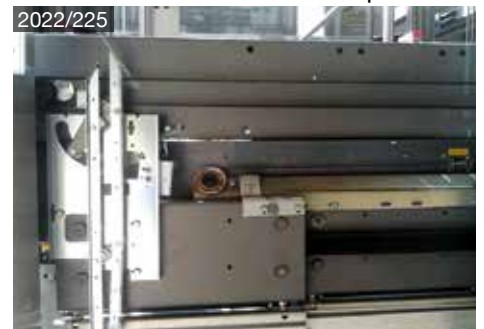
Schmitt & Sohn toothed belt center

2022/224



Schmitt & Sohn toothed belt telescope

2022/225



SCHMITT INGELHEIM center

2022/226



SELCOM 3201 Sinus telescope

2022/227



Selcom 3410 folding door

2022/228



Selcom Mosquito telescope

2022/229



Selcom RCF1 center

2022/230



Selcom RCF1 center telescope

2022/231



Selcom RCF1 telescope

2022/232



SEMATIC 3DC telescope

2022/233



Sematic 2000 Code B105AANX telescope

2022/234



Sematic 2000 900H center

2022/235



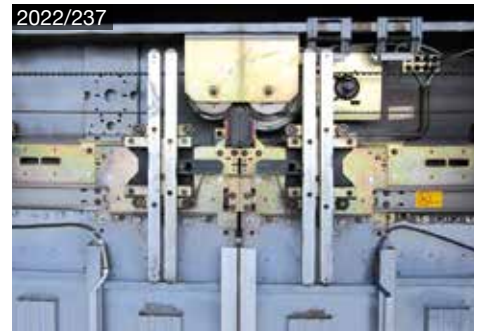
Sematic 2000 900H telescope

2022/236



Sematic 2000 center telescope

2022/237



Sematic 2000 S8M center

2022/238



Sematic 2000 S8M telescope

2022/239



Sematic DC PWM SRS telescope

2022/240



Sematic Minimotor

2022/241



SIEMENS AT

2022/242



Siemens AT25

2022/243



SLYDMA DELLERBA center

2022/244



Slycma DELLERBA telescope

2022/245



Slycma Dyn center

2022/246



Slycma Dyn telescope

2022/247



Slycma Ecosil center

2022/248



Slycma folding door

2022/249



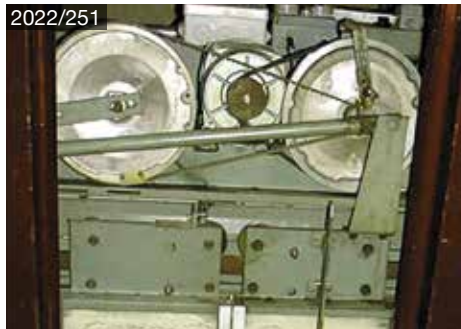
Slycma Jet center

2022/250



SORETEX center

2022/251



Soretex telescope

2022/252



STAHL center

2022/253



Stahl chain telescope

2022/254



STARLIFT 1 telescope

2022/255



Starlift 2 telescope

2022/256



Starlift center

2022/257



SUZHOU Eshine telescope

2022/258



TACOS center

2022/259



TELCO center

2022/260



TESIO telescope

2022/261



THYSSEN D6C Prisma center

2022/262



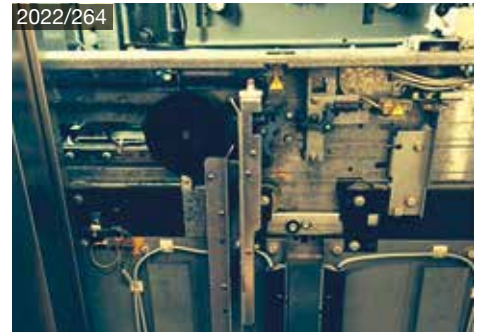
Thyssen D6C Prisma telescope

2022/263



Thyssen D6C Schnecke center

2022/264



Thyssen D6C Schnecke telescope

2022/265



Thyssen F2 center

2022/266



Thyssen F9 center

2022/267



Thyssen F9 telescope

2022/268



Thyssen F12 telescope

2022/269



Thyssen M2T D4 telescope

2022/270



Thyssen M2T D6 telescope

2022/271



Thyssen M2T D11 telescope

2022/272



Thyssen M2T W1, G1, D1 telescope

2022/273



Thyssen M2Z chain center

2022/274



Thyssen M2Z D4 center

2022/275



Thyssen M2Z D6 center

2022/276



Thyssen M2Z W1, G1, D1 center

2022/277



Thyssen M2Z W2 center

2022/278



Thyssen M3TK telescope

2022/279



Thyssen M4Z W1, G1, D1 center

2022/280



Thyssen M6Z W1, G1, D1 center

2022/281



Thyssen RT300 center

2022/282



Thyssen RT301 telescope

2022/283



Thyssen VF08 center

2022/284



Thyssen VF08 telescope

2022/285



Thyssen VF11 telescope

2022/286



Thyssen VF400 telescope

2022/287



TOSHIBA center

2022/288



UNITEC AT400 Door Operator

2022/289



VESTNER telescope

2022/290



WALTER MAYER segment sliding door

2022/291



WEBER center

2022/292



Weber telescope

2022/293



WEGAM telescope

2022/294



WERTHEIM telescope

2022/295



WESTINGHOUSE telescope

2022/296



WITTUR 3201 Sinus telescope

2022/297





8.20.20000
TSG 200 Motor left



8.20.20001
TSG 200 Motor right



8.20.40000.K1
TSG 400 Motor left



8.20.40001.K1
TSG 400 Motor right



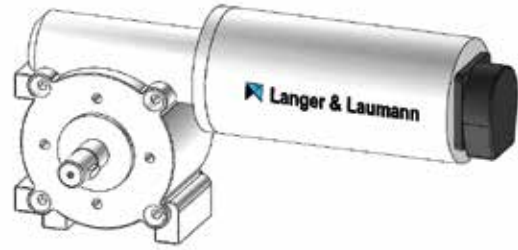
8.20.40009.K1
Large Motor left for AT25



8.20.40008.K1
Large Motor right for AT25



8.20.40003.K1
TSG 400 Motor left excl. wheel



8.20.40002.K1
TSG 400 Motor right excl. wheel



8.20.84000.K1
TSG Ex ATEX



9.20.00400.04
TSG V4 400 Lift door operator universal kit



9.20.00480.04
TSG V4 400 Lift door operator incl. TSG Sinus Drive



9.33.00400.04
TSG V4 400 Lift door operator Vario



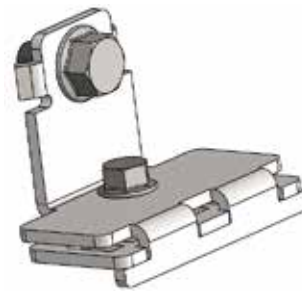
8.20.83111
TSG V4 Sinus Drive left



8.20.83112
TSG V4 Sinus Drive right



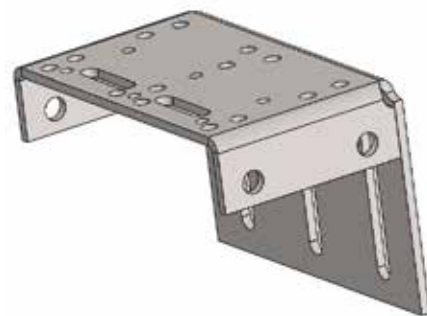
1.20.60005
TSG toothed belt lock, steel



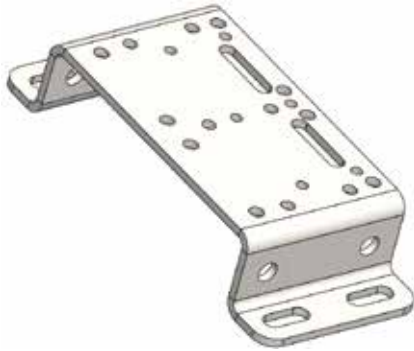
1.20.60007
TSG toothed belt lock, steel, mirror image



1.20.60004
TSG door panel coupler



1.20.60040
TSG universal bracket



1.20.60060
TSG universal bracket, version „hat“



1.20.60003
TSG counter roller



8.20.60002.40
TSG toothed belt



8.20.70050
TSG Webinterface



8.20.81520
TSG Easy Anschluss System



SPARE PARTS like **roller**, **guide shoes** and **skates** are available separately. Find the suitable spare part in our product catalogue: www.lul-ing.de or send us a request to info@lul-ing.de

Find your door:

