



**SHORts**

Suppliers to the Lift Industry

**A4**

# FLEXA TERGU



**KALEA**   
LIFTS

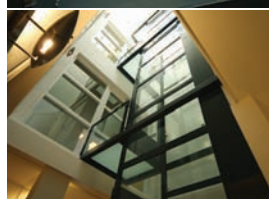
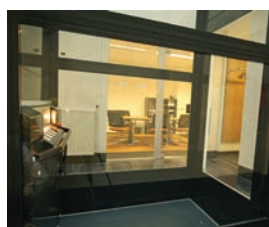
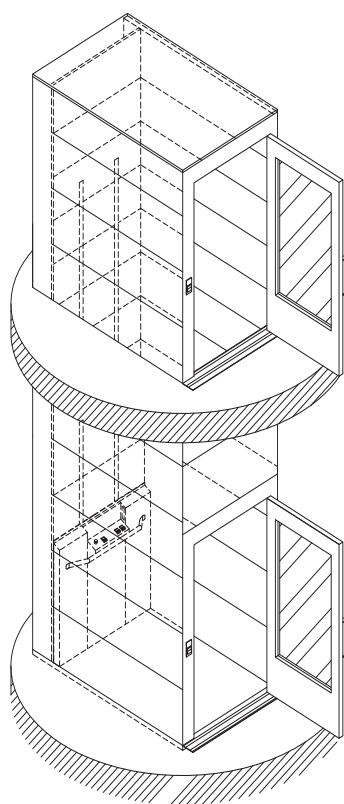
NEXT LEVEL

# FLEXA TERGU – where the space is very narrow

**THE A4 FLEXA TERGU** is a lift especially designed for narrow spaces. The machine room is lodged along the short side (width), a principle that we call Rucksack. The A4 Flexa Tergu is excellent for both indoor and outdoor environments, where ever you need freedom and increased accessibility - The A4 Flexa Tergu is a great option!

**A4 FLEXA TERGU** is a screw driven vertical platform lift with self sustained shaft enclosure. It requires very little construction work and needs no pit or machine room. The lift is easy to install and is delivered with a prefabricated shaft made of steel panels or panels made of laminated safety glass. Personalize your A4 Flexa Tergu by choosing your own RAL colour, glazed panels for the shaft or simply any number of the many different safety features available.

**THE A4 FLEXA TERGU** is EC-type tested and certified by the Notified Body DNV (Det Norske Veritas) according to the European Machinery Directive 2006/42/EC and the forthcoming European Standard for platform lifts.



## TECHNICAL INFORMATION

- Platform width: 1055 mm
- Platform length: 990/1090/1190/1290 or 1390 mm (1055x1390 std)
- Footprint dimensions: 1135 x 1800 mm
- Stops: 2-7
- Load: 400 kg
- Speed: 0.15 m/s
- Travel: max 13 m
- Pit: 100 mm alt ramp
- Self-sustaining screw and nut
- Self supporting shaft
- Operating system: Hold to run control
- Electrical door locks as standard
- Power supply: 220-400 V, 3-phase
- Fuses: 10 A
- Door size: 900x2000
- Single hinged door with panoramic window
- Electrical emergency lowering
- Electrical cabinet 500x600x200 mm
- Finish: RAL 9016 (white) powder coated

## OPTIONS

- Non standard platform (in steps of 100 mm)
- Audible bell
- Automatic light system
- Different RAL colours
- Different doors (AL3, AL4, EI60 & A41)
- Emergency telephones
- Three side glazing
- Pull down seat
- Voice annunciation
- Elbow button

For more information on different models, please visit [www.shorts-lifts.co.uk](http://www.shorts-lifts.co.uk) or contact us at Shorts

### Shorts

**Northern Office**  
PO Box 258  
Bradford  
West Yorkshire BD2 1QR  
Tel : 01274 305066  
Fax : 01274 736212  
[info@shorts-lifts.co.uk](mailto:info@shorts-lifts.co.uk)

**Southern Office**  
26 Elmfield Road  
Bromley  
Kent BR1 1WA  
Tel : 0208 228 1111  
Fax : 0208 228 1127  
[info@shorts-lifts.co.uk](mailto:info@shorts-lifts.co.uk)

Under our policy of continuing development, Shorts reserve the right to alter the dimensions or specification of any equipment illustrated or described in this brochure without prior notice. The details contained in this brochure do not constitute an offer